



Updating your BTECH DMR-6X2 PRO

To better understand the process, please read through all the steps before beginning the update. Also, please be sure that your BTECH radio's battery is sufficiently charged before you begin.

Very Important First Step

1. Launch your currently installed BTECH CPS software and **backup your existing codeplug** to a file on your computer
 - The following updates will **erase the contents** of your BTECH radio.
2. **Verify** that your codeplug backup file is saved and stored in a known, safe location

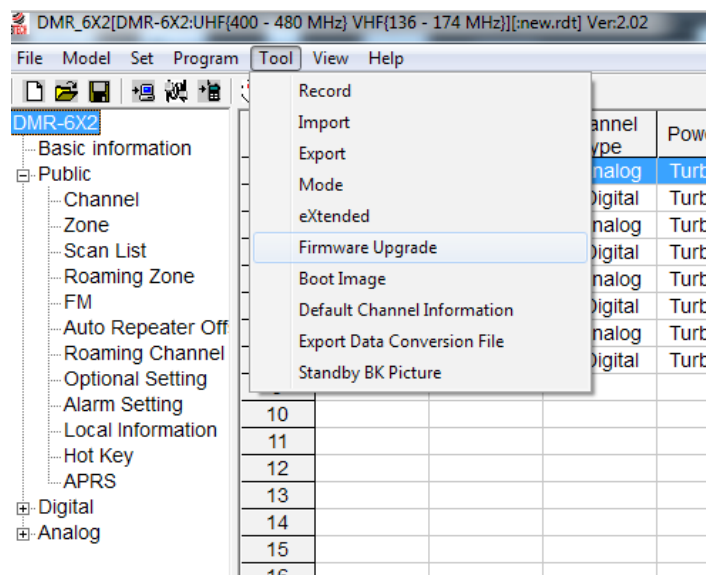
Installing the Latest Software

3. Extract the update package to any folder on your computer
 - **DMR-6X2-PRO-120.zip**
4. Launch the installer for the USB Virtual Com Port Driver included in the package
 - **USB Virtual Com Port Driver.exe**
 - Located in the **USB Drivers** subfolder of the package
 - Use the **x64** version for 64-bit systems
 - Use the **x86** version for 32-bit systems
5. Launch the CPS 1.20 installer included in the package
 - **DMR_6X2Pro_Setup_1.20.exe**
 - Install to C:\ DMR-6X2-PRO-1.20\ or choose another location

Please proceed with the Firmware update procedure below

Updating the BTECH DMR-6X2 PRO Firmware

6. Turn off your BTECH radio
7. Press and hold both of the following buttons
 - Push To Talk (PTT) button
 - Alarm button (orange button above display)
8. Turn on your BTECH radio
 - The LED will blink red to indicate that your radio is in update mode
 - Release the PTT and Alarm buttons
9. Connect your radio to the computer using the USB cable
 - Ensure that the cable is firmly connected to both the computer and your radio
10. Launch the Firmware Update application
 - **From the toolbar of the Installed CPS (1.20) select Tool < Firmware Upgrade**
 - i. You may need to run the CPS as your computer administrator to launch the firmware upgrade tool*
 - **Alternate Firmware Update Tool**
Launch Method: You can launch the firmware upgrade tool directly from your root CPS installed folder (example: *C:\DMR_6X2_1.20\Update\Firmware_Update*)
11. Click the “Open Update File” button



12. Browse to the new firmware file

- **DMR_6X2II_V1.20_20250118.spi**
- Located in the **DMR-6X2 PRO Firmware Update 1.20** subfolder of the package

13. Click Open

- File opened successfully message will be displayed
- Click OK

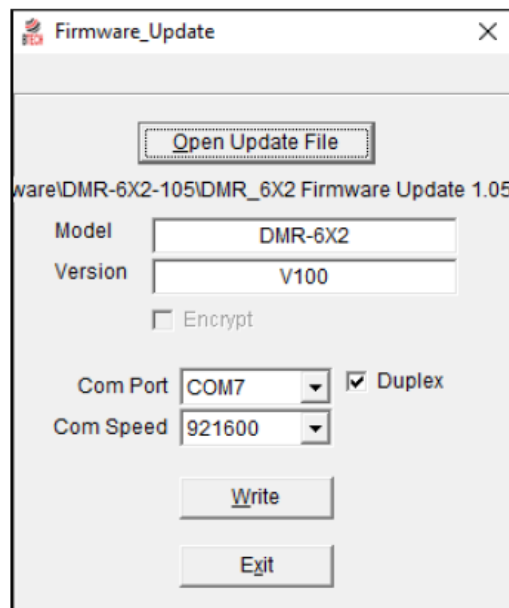
14. Select the communications settings

- Choose the Com Port assigned to the USB Virtual Com Port Driver. *If the COM port is not available, check that your radio is connected to your computer*
- Choose the Com Speed
- Default is 921600
- Enable Duplex

15. Click Write

- The updated firmware will be applied to your BTECH radio
- Upon completion of the update, your radio will reboot

If your radio shows the Clock Set screen at this point, the update may not have succeeded. Please retry the update procedure beginning at Step 6, carefully following each step in order. As always, please feel free to reach out to our Technical Support team if you have any questions or issues.



*Firmware update using the
QX_Firmware_Update application*

After completing the 1.20 firmware update, keep the Firmware Update application open and proceed with the Icon Update procedure outlined below.

Icon Updating for DMR-6X2 Series Radios

To update the icons on the DMR-6X2 Series Radios using the new file **DMR_6X2_PIC_V2.00.spi** (located in this update package), follow these steps:

1. Prepare the Radio:

- a. Hold down the **PTT** key and the **PF2** key (the bottom side key) simultaneously.
- b. While holding these keys, power on the radio. The LCD will display **UPDATE MODE**.

2. Connect to the Computer:

- a. Use a PC cable to connect the radio to your computer.

3. Launch the Firmware Update Tool:

- a. Open the CPS (programming software) and navigate to the firmware upgrade option from the toolbar.

b. Alternate Firmware Update Tool Launch Method: You can launch the firmware upgrade tool directly from your root CPS installed folder (example:
C:\DMR_6X2_1.20\Update\Firmware_Update)

4. Load the Update File:

- a. In the update tool, click **Open Update File** and select **DMR_6X2_PIC_V2.00.spi**.

5. Set Communication Settings:

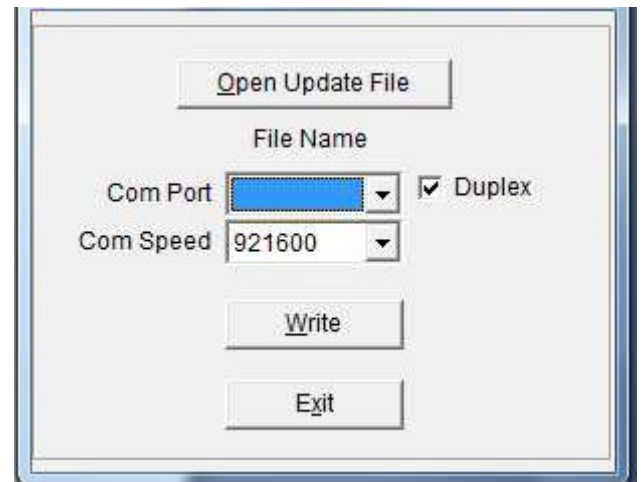
- a. Set **Com Speed** to **921600**.
- b. Enable the **Duplex** checkbox.

6. Update the Radio:

- a. Click **Write** to begin the update process. The tool will update the radio with the latest icons.

7. Reboot the Radio:

- a. Once the update is complete, reboot the radio.



This procedure ensures your BTECH DMR-6X2 Series radio is updated with the latest icons file set.

A MCU Update is required after a firmware update or icon update, see “Resetting the Main Control Unit (MCU)” below on this procedure

Resetting the Main Control Unit (MCU)

1. Turn off your BTECH radio
2. Press and hold both of the following buttons
 - Push To Talk (PTT) button
 - PF1 key (the key below the PTT button on the left side of your radio)
3. Turn on your BTECH radio
 - The display will show “Are you sure you want to Initialize radio?”
 - Release the PTT and PF1 buttons, Press the “_” (above the P1 button) to Confirm
 - **Please wait** - do not interrupt the process
 - Upon completion of the reset, your radio will reboot
4. When prompted, set the date and time
 - Use the P1 key to navigate the date / time fields
 - Use the Up / Down keys to change the values in the fields
 - The date format is DD-MM-YYYY
 - Use the Green key to save the date / time settings
5. Launch the new version of CPS (1.20), and open the backup of your codeplug created in Step 1
6. Rewrite your original codeplug to your radio

Congratulations! You have finished updating your DMR-6X2 PRO.

We sincerely hope you have an enjoyable experience with your BTECH radio.

Please let us know if you experience any issues with the new firmware; you can earn a reward via our new “bug bounty” program!

73,

BTECH